

# EX300 Control Suite

Tablet-based command and control



The EX300 Control Suite provides a flexible and tailored control interface designed to meet the requirements of professional control rooms.

Engineered with the surveillance operator in mind, the EX300 Control Suite is comprised of an easy-to-install Synergy 3-based EX300 App, and the EX300 Joystick and Keypad. These devices provide reliable and flexible interoperability for surveillance room operators. And, with its auto discovery wizards, device installation is quick and easy.



## Flexible Solutions for Your Control Room

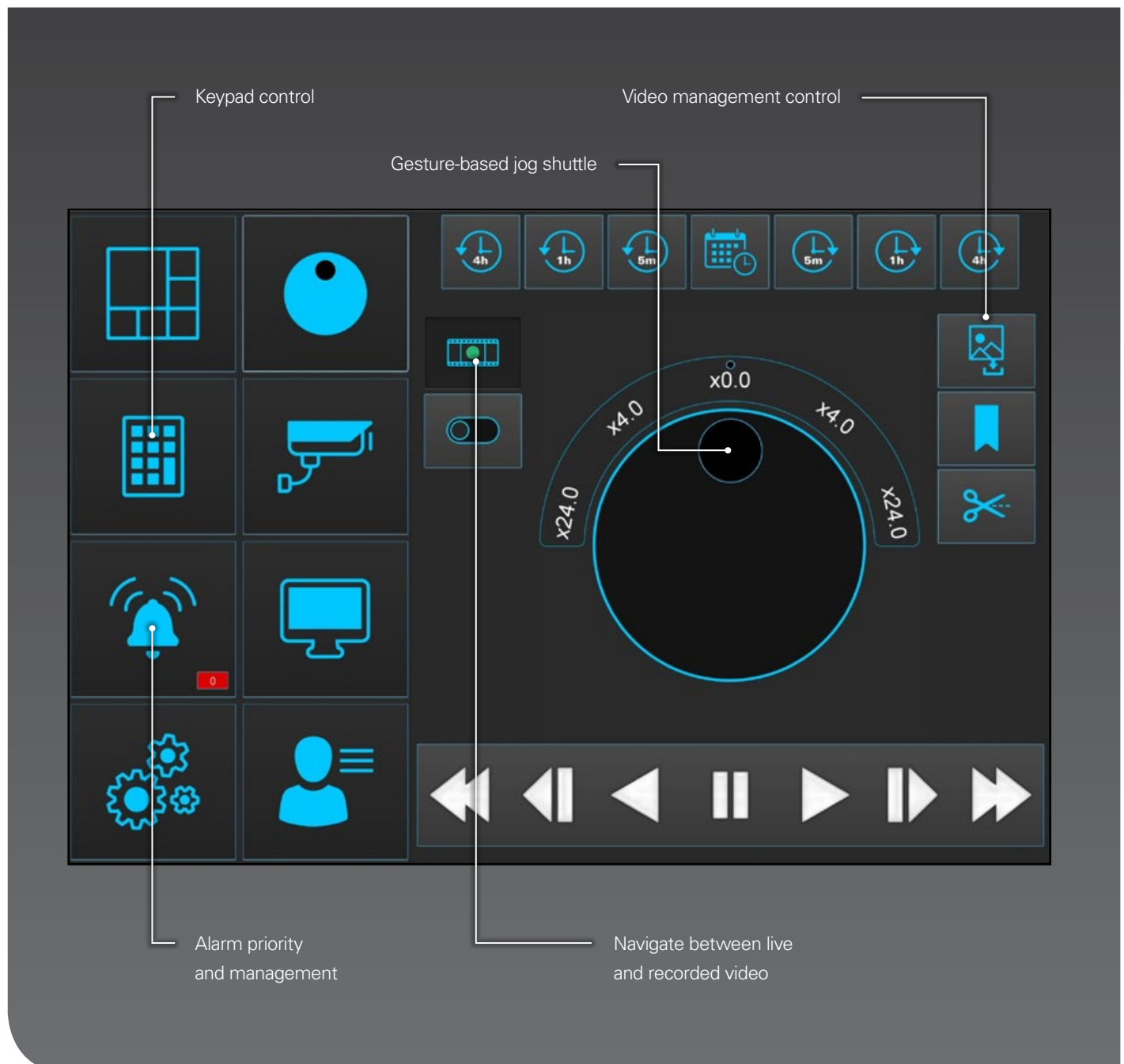
The EX300 Control Suite is available as a complete solution which includes the tablet, joystick, keypad, dock and stand. Alternatively customers may combine individual devices to create a tailored solution that meets their unique operational needs or they can load the EX300 App to their own hardware to use in conjunction with existing

keyboards, joysticks or other third party USB devices (such as jog shuttle).

With this scalable and future-proof approach, the control device hardware can be changed as needs and technology evolve, ensuring an optimized return on investment.

The open architecture of the EX300 App facilitates integration with thousands of Microsoft HID compatible devices including IP66 or NQA-1 for customers to select the device they prefer.

## The EX300 App – Control at Your Fingertips



**INTEGRATED FUNCTIONALITY:**

- Gesture-based camera selection and control
- Camera control functions
- User-definable quick select buttons
- Display wall, salvo and video selection control
- User-definable custom key mapping
- Jog shuttle control
- Video management control
- Alarm management

**Intuitive control for operator efficiency**

The EX300 App employs touch and gesture-based commands for intuitive command and control, allowing users to transition swiftly between commonly used operational tasks.

Gesture-based controls empower users to create bookmarks, play and pause video and quickly capture static images, giving them the familiarity of a tablet experience with the benefits of Synergy 3 control capability.

The EX300 App is ideal in surveillance environments where reaction and response time is paramount. Operators no longer need to switch between a mouse, keyboard and PTZ controller.

**Tailored user experience**

Operators can select either the traditional or enhanced user interface on the EX300 App depending on individual preference. Because the icon set is easy to understand and is language-independent, users may save preferences to their profile for complete personalization. To ensure operational role usage is not compromised, all features are linked to Synergy 3's permission and access rights database to allow or restrict functions by user or user group.

**Incident response and management**

Alarm prioritization, video dubbing, map integration actions and alarm details, can be processed directly from the EX300 App for quicker response to incidents.

With the gesture-based jog shuttle and video management controls (including bookmarks, clipping, and image capture), incident and evidence management is streamlined.

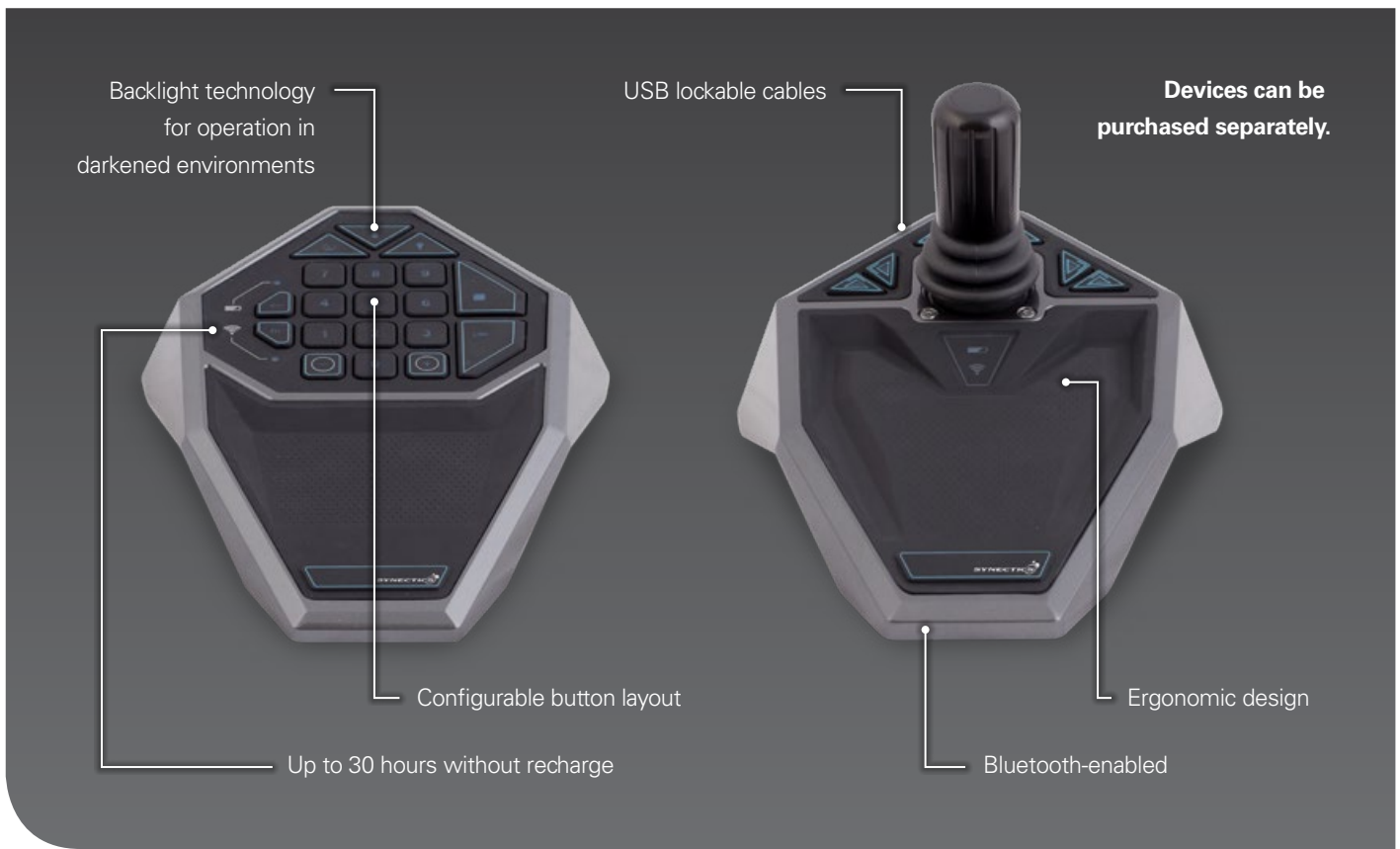
**Audit control**

Comprehensive user logs are retained for all processed activity and are fully auditable within Synergy 3's management tool suite.

All recorded actions and alarms are stored directly on the Synergy Server for safeguarding and future evidence handling.

Additionally, Area of Effect alarms make sure that EX300 devices are not removed from designated work environments.

## EX300 Joystick and Keypad



Users may easily map operational commands to hot-keys and reconfigure button layouts of both the EX300 Keypad and Joystick. These features allow individual users to tailor the device to their personal or workstation requirements for efficient access to the appropriate functionality at the right time.

### Streamline Day-to-Day Activities

Configurable buttons can be programmed for individual user operations, making commonly-used functions and macros easily accessible for operational efficiency and consistent response.

Backlight technology in the control devices enhances visibility in typically darkened environments.

Devices are able to run on traditional power or, for a cable-free desktop, with rechargeable batteries that can operate for 30 hours between charges.

### Ergonomic design and functionality

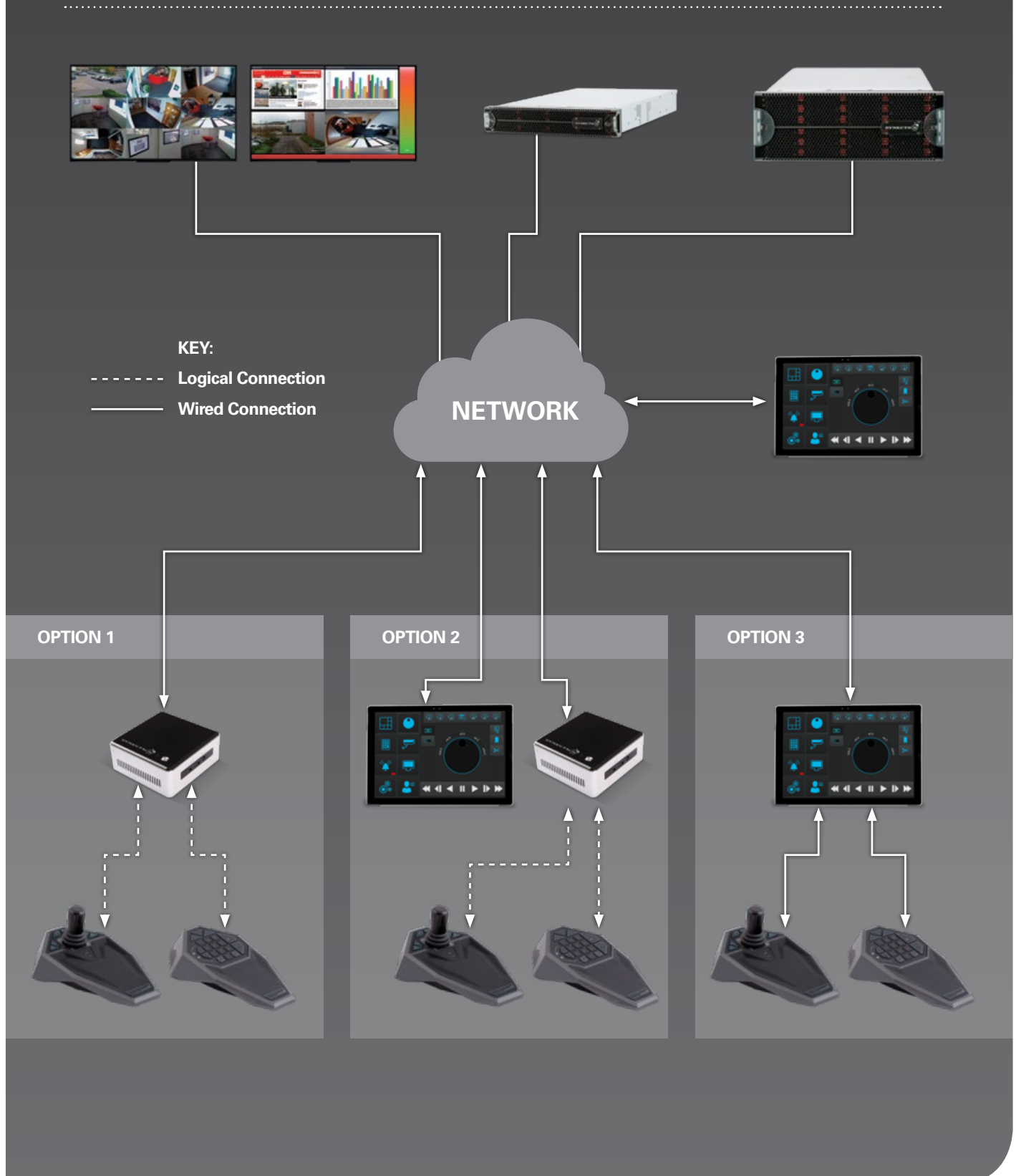
The EX300 Joystick and Keypad devices support both left and right hand operator usage, with desk and grip stability and locking USB connections. The devices are also Bluetooth-enabled to reduce desktop clutter.

//////  
30 HOURS  
BATTERY  
LIFE  
//////

**With auto discovery installation wizards, device installation is quick and easy.**

# Flexible Configuration of Devices

The EX300 Control Suite offers flexible configuration to facilitate control of the Synergy 3 command and control platform, with a variety of connection and operation options.



# Specifications

GENERAL	EX300 App	EX300 Joystick	EX300 Keypad	Horizontal Tablet Stand
Synergy 3 Ready	✓	✓	✓	N/A
Synergy Pro Compatible	✓	✓	✓	✓
Size ( L x W x H )	N/A	70 mm x 190 mm 270 mm	120 mm x 190 mm x 270 mm	230 mm x 300 mm x 60 mm (adjustable)
Weight	N/A	1 kg	1 kg	300 g
Bluetooth Enabled	N/A	✓	✓	N/A
Lockable USB Included (1.5m)	N/A	✓	✓	N/A
Backlight Keys	N/A	✓	✓	N/A
Adjustable Height	N/A	N/A	N/A	✓
Dock Cable Management	N/A	N/A	N/A	✓
Low Battery Alarm	N/A	✓	✓	N/A
Out of Range Alarm	N/A	✓	✓	N/A
Operating Temperature	N/A	18°C – 45°C	18°C – 45°C	N/A
Storage Temperature	N/A	20°C – 80°C	20°C – 80°C	N/A
Humidity	N/A	5% to 90% non-condensing, 40% recommended	5% to 90% non-condensing, 40% recommended	N/A
Power Consumption (Charging)	N/A	500 ma	500 ma	N/A
Power Consumption (Connected)	N/A	100 ma	100 ma	N/A
Battery Usage Length Before Recharge	N/A	20 hours	30 hours	N/A
Windows HID Controller Compatible	✓	✓	✓	N/A

## MINIMUM SPECIFICATION REQUIREMENTS FOR TABLET

Operating System	Windows 10
CPU	Intel m3
RAM	2GB System RAM
Screen	1080P
Stand Size	300 mm x 250 mm maximum
Required Connectivity	Dedicated wired ethernet connection
Connectivity	USB, Bluetooth

## PART NUMBERS

SY-EX300-PK1	EX300 Monitor, EX300 App, Dock, Stand, EX300 Keypad, EX300 Joystick
SY-EX300-PK2	EX300 Monitor, EX300 App, Dock, Stand, EX300 Joystick
SY-EX300-PK3	EX300 App, EX300 Keypad, EX300 Joystick
SY-EX300-Joystick	EX300 Joystick
SY-EX300-Keyboard	EX300 Keypad
SY-EX300-Software	EX300 App
SY-EX300-Monitor	EX300 Monitor
SY-EX300-Stand-Flat	EX300 Horizontal Stand
SY-EX300-Stand-Desk	EX300 Vertical Stand

## Synectics

sales@synecticsglobal.com

**synecticsglobal.com**

Specifications subject to change. E & OE.

Literature Reference: EX300-DS/0918/A4 Iss 5

Copyright © Synectic Systems Group Limited, 2018. All Rights Reserved.