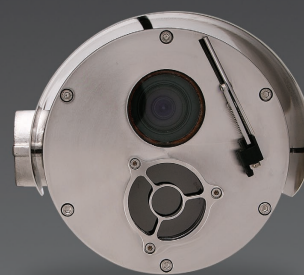


# COEX™ C3000 TriMode Series '6' Ex d Fixed Camera Station

The COEX™ C3000 TriMode Fixed camera station 6 series has a unique compact and lightweight design specifically developed for hazardous area applications. Combined with the latest thermal imaging technology with a day / night (colour / mono) camera module the C3000 TriMode camera stations ensure unprecedented visual feedback in all light conditions.



Utilised around the world to assist with:

- Pipeline monitoring
- Navigation during night time and foggy conditions
- Ice Detection
- Piracy Detection
- Man-overboard Safety
- Environmental Protection
- Intruder Detection
- Safety and Security Protection

Even during daylight the C3000 TriMode can provide increased visibility over conventional camera stations with human detection at over 1100 m<sup>\*3/4</sup>

COEX Series 6 camera stations are fitted with a 640 x 480 thermal imaging camera and a high resolution analogue day / night camera with removable IR cut filter.

## Features

- ATEX II 2 GD Certification
- IECEx Certification
- Ex d IIC, T4, T5 or T6
- DNV Type Approval
- IP66 & 68 Rated – completely protected against dust & water ingress, for the most extreme environments
- Electro-polished 316 stainless steel, for optimum corrosion resistance
- TriMode Operation – Day (colour), Night (mono) and Thermal Imaging
- Low Voltage Operation
- Advanced Mechanical Design to minimise size and weight
- Germanium and Toughened Glass Windows

## Options

- Integral Wiper [W]
- COEX™ "FEWS" Ex Pressurised Wash System
- Fibre Optic Transmission (via associated junction box)
- COEX™ Wall Mount Bracket
- COEX™ Range of Tilt Down Towers and accessories

# Specifications

CERTIFICATIONS / RATINGS		[OPTIONS]
Certifications / Ratings	Ex d IICT4 / T5 / T6 Gb; Ex tb IICT4 / T5 / T6 Db; ATEX II 2GD IECEX DNV Type Approval CE Compliant to EMC Directive IP66 & IP68 to IEC 60529 (30m Submersion for 4 hrs) -55°C to +60°C	
ENVIRONMENTAL		
Operating Temperature	-45°C to +60°C	
MECHANICAL		
Material	Electro-polished 316 Stainless Steel	
Windows	Germanium and Toughened Glass, Thermostatically Operated Demister [Wiper for Day / Night View only]	
Mounting	1 x M10 Hole	
Dimensions (W x D x H)	217.2 x 310 x 250.2 mm	
Weight	14.8 kg	
ELECTRICAL		
Power Requirements	24Vac 50 / 60Hz or 24Vdc (±10%)	
Power Consumption	92VA Maximum	
TELEMETRY		
Interface	RS485 serial asynchronous data	
Protocols*2	Synectics™, Pelco®, and other industry standard protocols available	
Functions*1	Zoom, Aux1, [Aux2] and Aux in	
Day/Night Camera Functions*1	On / Off Selection of: Digital Zoom, BLC, Autofocus; Auto / Manual Selection of: Focus, Colour / Mono Operation, Frame Integration, White Balance	
Thermal Camera Functions*1	Continuous Electronic Zoom, Multiple Colour Palettes (including Inverted), Multiple Contrast Display, Contrast and Level Control, Hot and Cold Spot, Auto / Manual Shuttering	
OSD	Password protected on-screen menu system for camera station configuration and diagnostics	
CAMERA / LENS		
	C3000-2F36-T6>> [W]*5	C3000-2F10-T6>> [W]*5
Video Output	1.0 Vpk-pk CVBS into 75Ω; Colour PAL 50Hz [NTSC 60Hz]	
Image Sensor	¼" EXview HAD CCD	⅓" Super HAD CCD II
Resolution	>550TVL	>530TVL
S/N Ratio	>50dB	
Zoom Range	36x zoom (up to 432x with digital zoom)	10x zoom (up to 120x with digital zoom)
Minimum Illumination	1.4 lux 0.1 lux (with ⅓ sec integration) 0.01 lux mono (with ⅓ sec integration)	0.25 lux 0.015 lux (with ⅓ sec integration) 0.0004 lux mono (with ⅓ sec integration)
Focal Length	3.4 to 122.4 mm	5.1 to 51 mm
Angle of View	57.8° to 1.7°	52° to 5.4°
Aperture	F1.6 to 4.5	F1.8 to 2.1
THERMAL IMAGER		
	C3000-2F<<-T650 [W]*5	C3000-2F<<-T625 [W]*5
Image Sensor	Amorphous Silicon Microbolometer	
Spectral Response	8 – 14 μm	
Thermal Sensitivity	70mK [50mK]	
Refresh Rate	<9Hz [25Hz]	
Resolution	640 x 480	
Fixed Focal Length	50 mm	25 mm
Angle of View	12.4° x 9.3°	25° x 18.7°
Human Detection*3/4	~1100 m	~560 m

NOTE: \*1 Dependant on equipment fitted. \*2 Refer to Synectics for availability and compatibility with other control systems \*3 Based on Johnson Criteria. \*4 Actual range may vary depending on camera set-up, user experience, environmental conditions and type of monitor or display used. \*5 >> replace with thermal camera module and << replace with day / night camera module.

## Synectic Systems

sales@synecticsglobal.com

synecticsglobal.com

Specifications subject to change. E & OE.

Copyright © Synectic Systems Group Ltd., Synectic Systems, Inc., Synectic Systems (Asia) Pte. Limited 2015. All Rights Reserved.

MANUFACTURER OF  
  
 CAMERA STATIONS

Reference Numbers: 03GF0614\_2  
 C3000T2FS6/0215/A4 Iss 2